

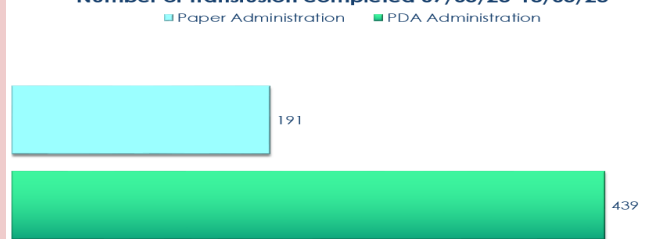
# Blood Matters

## Transfusion Newsletter - Closed Loop Blood Special Summer 2023

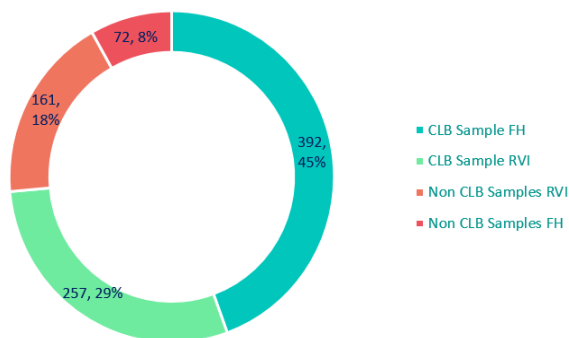
### Update!

The Closed Loop Blood (CLB) System is now live across the majority of the trust. As your transfusion team we would like to thank all our cascade trainers for their help in training staff, and to all staff for facilitating the implementation of the new system. We really appreciate the pressures you are all working under and how challenging it can be to make changes during such difficult times.

Number of Transfusion completed 07/05/23-13/05/23



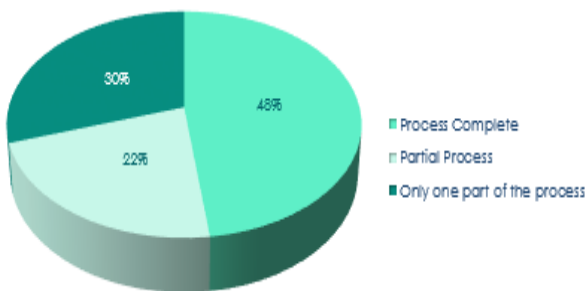
Snapshot of samples 07/05/23-13/05/23



### In May 2023 an audit showed

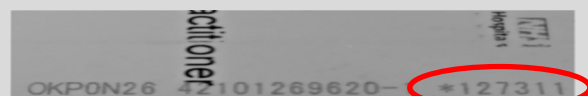
- ◆ 74% of the 882 transfusion samples were taken using the new CLB system.
- ◆ 70% of the 630 blood components/products transfused were administered using the CLB system.
- ◆ The full process is only completed 48% of the time. The process has 2/3 parts depending on the use of eObs.

Administration of products using the PDA



### Medics take note!

Are you registered on the CLB system? If not please contact the transfusion practitioner team — we will need your payroll number. For Medics without a payroll number (LET employed) there is a 6 digit number on the reverse of your staff ID that can be used



FOR FURTHER INFORMATION  
PLEASE CONTACT YOUR TRANSFUSION PRACTITIONER TEAM:  
NUTH.HOSPITALTRANSFUSIONTEAM@NHS.NET  
TRANSFUSION PRACTITIONERS: LUCY BEVAN 77509, LAURA DUFFY 48853  
ADVANCED TRANSFUSION PRACTITIONER: AIMI BAIRD 48852



## Benefits of CLB

- ◆ Improved patient safety
- ◆ Real-time transfusion information in patient records
- ◆ Reduction in nurse time for transfusion (1 person check)
- ◆ Reduction in the number of rejected samples
- ◆ Reduction in transfusion related DATIX
- ◆ Reduced paper forms
- ◆ Reduction in blood wastage
- ◆ Increased traceability



## Reminder

The CLB system should now be used Trust wide (except Theatres) for the following tasks:

- ◆ Ordering Samples
- ◆ Bedside electronic labelling of samples
- ◆ Authorising (prescribing) blood components
- ◆ Documenting consent and refusal for blood transfusion
- ◆ Documenting special requirements for transfusion
- ◆ Real time records of transfusions and volumes given

When the CLB system **HAS** been used to administer the blood component the pink receipt can be discarded — **DO NOT** return them to the lab as this causes duplication of work.

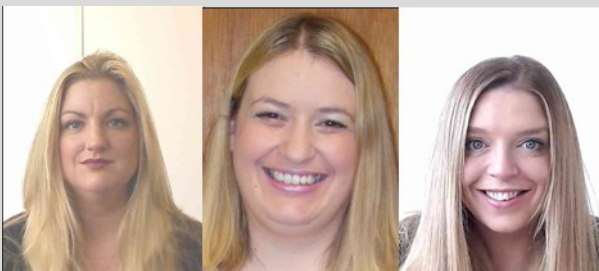
## Major Haemorrhage Protocols

Please note there has been no changes made to the Major Haemorrhage Protocols across the Trust. In the event of major haemorrhage please contact the transfusion lab on the relevant site to activate major haemorrhage, Collect the boxes in the usual manner and document transfusion on the major haemorrhage prescription forms provided by the lab.

## Next Steps!

We need to continue to increase compliance across the Trust - we aim to continue visiting wards to support staff with training and improve confidence in using the system. If you have any further suggestions on how we can support your team/clinical area please get in touch.

We hope to expand the rollout to theatres later in the year and we appreciate your patience and support during this next phase.



As always the transfusion practitioner team are happy to attend an area and provide training or refresh training on any aspects of the new closed-loop system. We also have a series of quick use guides that we can provide.

FOR FURTHER INFORMATION

PLEASE CONTACT YOUR TRANSFUSION PRACTITIONER TEAM:

[NUTH.HOSPITALTRANSFUSIONTEAM@NHS.NET](mailto:NUTH.HOSPITALTRANSFUSIONTEAM@NHS.NET)

TRANSFUSION PRACTITIONERS: LUCY BEVAN 77509, LAURA DUFFY 48853

ADVANCED TRANSFUSION PRACTITIONER: AIMI BAIRD 48852

